

12 Summerfield Drive, Guelph, ON N1L 1T6

\$989,999 • Single Family • Detached • 4 bedrooms • 3 full & 1 partial baths

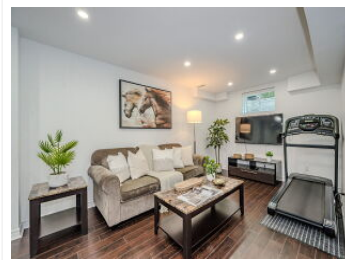
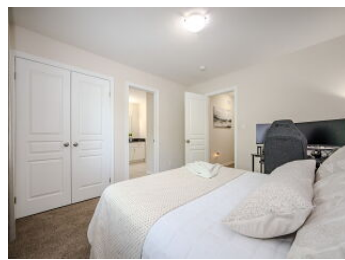
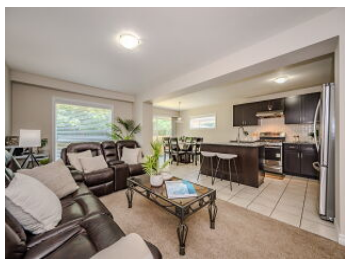
• 1907



View virtual tour at:
<https://12summerfield.com/>



Welcome to 12 Summerfield Drive in one of Guelph's most desirable neighbourhoods - Westminster Woods! This 2-storey, detached home, built in 2015, offers the perfect blend of modern elegance and family-friendly comfort. Whether you're looking to upsize, downsize or find the ideal family home, this property has it all. With an open-concept layout that seamlessly integrates living, dining and kitchen spaces, freshly painted in neutral tones, the interior exudes warmth and sophistication. With multiple bedrooms and bathrooms, this home provides ample space for a growing family or for those who love to entertain. Upstairs you'll find the primary bedroom, walk-in closet and ensuite. The second and third bedrooms are sizeable with spacious closets, providing comfortable and inviting spaces. Downstairs, the basement is fully finished & offers a versatile living space perfect for spending time with family & hosting guests. With a spacious fourth bedroom, bathroom and SEPARATE ENTRANCE, in-law



Melanie Jaffray

519-710-1799
melanie@melaniejaffray.ca

RE/MAX Real Estate Centre Inc.

